

NETAFIM "M" STAINLESS STEEL CLAMP (MIKALOR)



APPLICATIONS

- Perfectly suitable for use in dripperline and LDPE to Barb fittings.

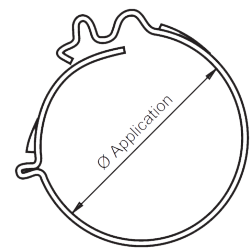
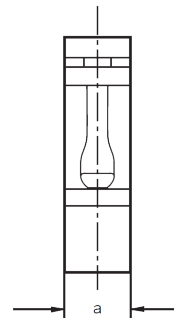
FEATURES & BENEFITS

- The design of the locking device of the Clip Clamp allows for great precision when mounting.
- This device, together with the folds in the material confers a spring function to this clamp, meaning that it can maintain constant pressure around the hose.
- The rounded band edges avoid damage to the hose.
- This clamp is especially suited for use in assembly lines and industrial applications due to the ease with which it can be mounted and the AISI 304 material employed in its manufacture.
- Manufactured in Europe, ensures quality.



CLAMP SPECIFICATIONS

BAND	AISI 304 (A2)
	Stainless Spring Steel



TECHNICAL SPECIFICATIONS

CODE	SIZE	SUITS	RANGE (MM)
00060-006000	14	13mm LDPE, Techline	14.5 – 16.0
00060-006020	15	16mm Dripperline	15.5 – 17.0
00060-006040	16	17mm Dripperline	16.5 – 18.0
00060-006060	17	16mm LDPE New Zealand	17.5 – 19.0
00060-006080	18	20mm Dripperline	18.5 – 20.0
00060-006100	19	Blind 20012	19.5 – 21.0
00060-006120	20	19mm LDPE	20.5 – 22.0
00060-006140	21	23mm Dripperline	21.5 – 23.0
00060-006160	22		22.5 – 24.0
00060-006180	23		23.5 – 25.0
00060-006200	24		24.5 – 26.0
NOT AVAILABLE YET	25	27mm Dripperline*	25.5 – 27.0
	26	27mm Dripperline**	26.5 – 28.0
	27	25mm LDPE	27.5 – 29.0
	36	32mm LDPE	36.0 – 38.0

Please note: Order in Multiples of 100 units.

* with Antelco SB (Single barb) fitting. ** with other fittings