

# 75 Series CONTROL VALVES

The strong and versatile reinforced nylon valves of 75 series, exhibit exceptional hydraulic characteristics and provide optimal control of irrigation systems.



Outstanding  
Performances



Ultimate  
Durability



Extremely  
Versatile

## / Benefits & Features

- **Outstanding performance** High flow capacity and very low head losses achieved by a flexible diaphragm that provides a wide water passage throughout the valve's hydrodynamic body
- **Ultimated durability** Long life and easy inline maintenance accomplished by structural simplicity and high-quality corrosion-free materials.
- **Extremely versatile** Gal plastic valves are available with full selection of control functions and various end connections

## / Specifications & Recommendations

- Maximum pressure – 10 bar (145 psi), for 3"H - 12 bar (175 psi)
- Minimum recommended flow – 1 m<sup>3</sup>/h (5 gpm)
- Minimum operating pressure – 0.4 bar (6 psi)\*
- Maximum operating temperature – 60°C (140°F)

\* Available with low pressure diaphragm

## → HYDRAULIC PERFORMANCE

DIAMETER	INCH	¾	1	1½	2	2½	3R*	3	4R*	3H*	4	6R*	6	8R*
	MM	20	25	40	50	65	80	80	100	80	100	150	150	200
FLOW RATE FACTOR**	KV	7.5	15	60	71	79	90	120		250	350		580	
	CV	9	17.5	70	82	92	92	140		292	410		678	

\*\* In order to calculate the head loss at any desired flow rate, use the following equation: Head loss = (Flow rate/Flow rate factor)<sup>2</sup>

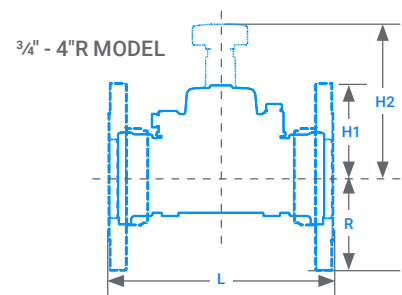
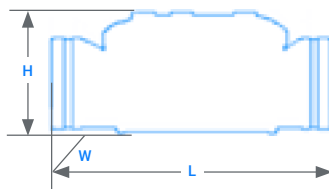
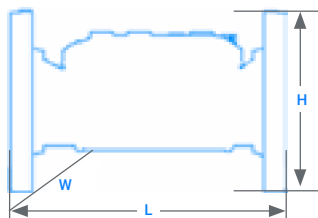
## → TECHNICAL DIMENSIONS

DIAMETER	INCH	¾	1	1½	2	2½	3R	3	3*	4R*		3"H	3"H*	4	4*	6R	6*	8R*
	MM	20	25	40	50	65	80	80	80	100		80	80	100	100	150	150	200
HEIGHT	H1		38/1½	38/1½	67/2½	67/2½	67/2½	100/3½	100/3½	100/3½		THRD.	FLNG.	GRV.	FLNG.			
	H2		100/4	100/4	112/4¾	112/4¾	112/4¾	180/7¼	180/7¼	180/7¼	H	162/6¾	190/7½	160/7	230/9	285/11½	285/11½	307/12
	R		18/1½	22/1¾	30/1½	37/1½	47/1¾	54/2¼	60/2¾	100/3½	110/4¾	W	236/9¾	236/9¾	236/9¾	285/11½	285/11½	307/12
LENGTH	L		113/4½	124/4¾	188/7¾	199/7¾	228/9	236/9¼	260/10¼	290/11¾	290/11¾	L	452/17¾	485/19	350/13¾	373/14½	420/16½	500/19¾
VOL. CTRL. CHAMBER	CC / GAL		36/0.01		180/0.04			250/0.05						500/0.13			500/0.26	
WEIGHT	KG / LBS		0.2/0.44	0.2/0.44	0.9/2	0.9/2	1.2/2.6	1.4/3.1	1.8/4.4	3/6.8	4/8.8	4.7/10.4	6/13.2	3.9/8.6	6/13.2	7.5/16.5	10.6/23.4	13.8/30.4

R: Reduced, 3R: 323", 4R: 434", 6R: 646" 8R: 868", H: High Flow, 3H: 343"

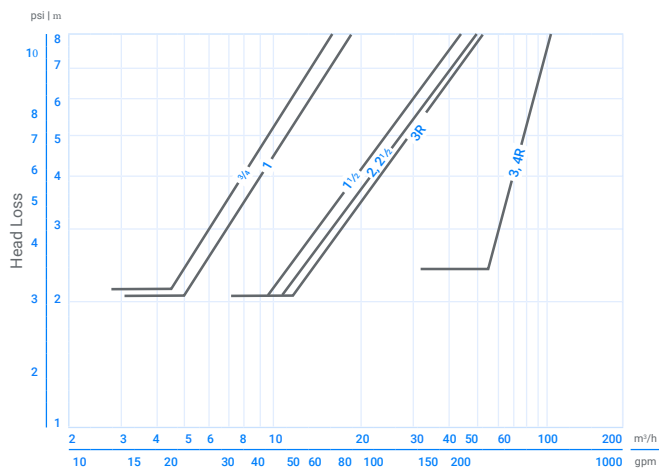
\* Dimensions for those diameters include flanges

### 3"H - 8"R MODELS

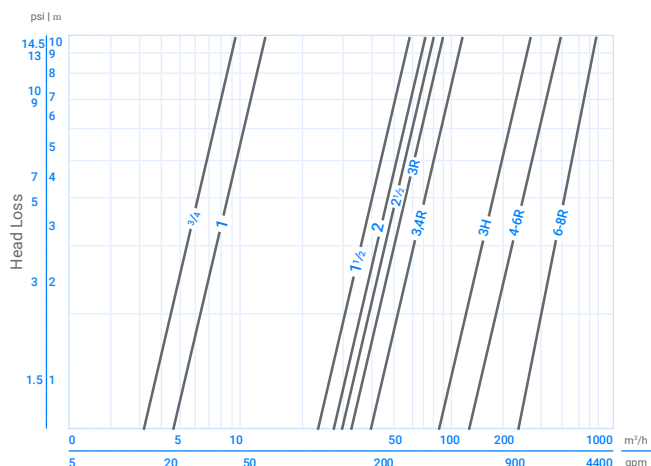


## → HEAD LOSS

### 2-WAY



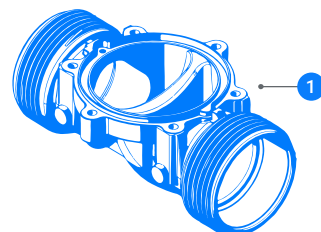
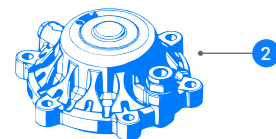
### 3-WAY



## → MATERIAL SPECIFICATION

#	PART	MATERIAL	OPT.
1	BODY	REINFORCED NYLON	POLYPROPYLENE
2	BONNET	REINFORCED NYLON	POLYPROPYLENE
3	DIAPHRAGM	NATURAL RUBBER	ALD70
4	SPRING	SST 302	SST 316

\* Optional parts for special chemical resistance



# 75 Series 3"H - 8"R CONTROL VALVES

The NEW S75 with renewed design innovation provides the highest hydraulic performance for all of your valve applications.



Outstanding  
Performances



Ultimate  
Durability



Extremely  
Versatile

## / Benefits & Features

### → Outstanding performance

New innovative body design provides optimal flow characteristics for both flow and head loss. In addition, the valve reaction times are dramatically improved, enhancing in-field experience

### → Ultimated durability

Improved corrosive resistant material composition provides for a wide range of hydraulic applications while also delivering higher pressure ratings than ever before, up to 12 bar

### → Extremely versatile

We listened to you, our customer. The S75 design is adaptable to multiple applications of valve sizing and connection type. Whether your application is 3" Threaded or 8" Flange, we can connect to it. The need to store multiple valve sizes is reduced

## / Applications

- The NEW 3"H-8"R models were engineered to operate in the widest pressure ranges possible for optimal control and precision. The NEW S75 are ideal for large scale irrigation projects in field crops, vineyards, or orchards

→ CONNECTION TYPES

