



75S Plastic valves series

The world's first diaphragm valve with asymmetrical diaphragm



Flanged 4"



Flanged 6"R

- KV - 275 m³/h @ 1 bar
- Maximum capacity for continuous work - 160 m³/h
- High resistance to cavitation conditions
- Option for different end connections (Inlet and outlet in different diameters)
- Maximum working pressure - 12 bar
- Compact and durable structure

Dorot 75S Series 4" & 6"R Gal Plastic Valves

The new 4"-6"R plastic valve is an innovative device designed for agriculture and landscape applications. The valve can be used for a variety of water control applications and is made from sturdy, durable, corrosion resistant, high-quality materials.

Equipped with a direct-sealing diaphragm, the valve is operated by the pressure in the pipeline and can be supplied in a variety of end connections.

With its simple design, the valve allows maximum dependability at a minimum level of maintenance, while yielding optimal irrigation operation.

Features

- Versatile end-connections
- High-capacity design with extremely low pressure losses
- Unique a-symmetric design for unmatched hydraulic performance
- Corrosion resistant high quality materials
- Low volume control chamber
- Highly robust structure- PN12/psi175

Benefits

- Simple inline installation for easy, low-cost maintenance
- High Flow rate
- Very low opening pressure
- Fast response- short open/closure time
- Strong and reliable, even under harsh conditions
- Super compact structure and minimal parts

Available Versions

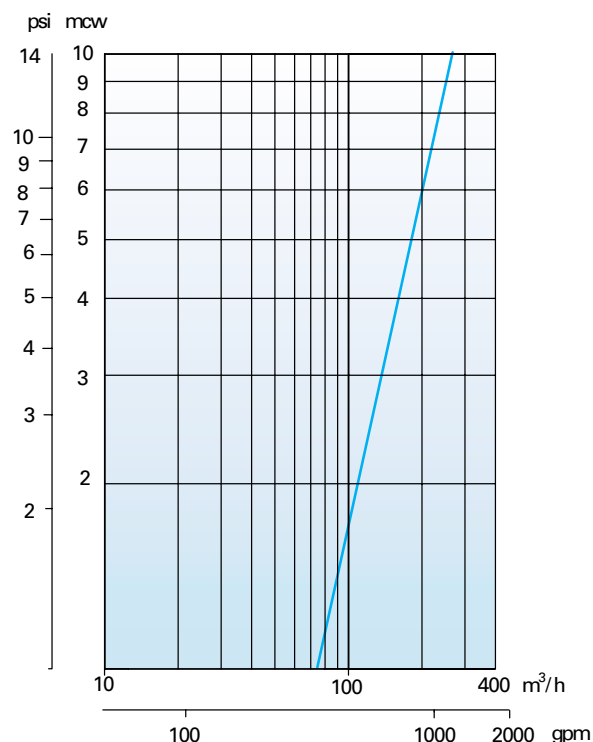
The 4"-6"R 75S valve is available with Grooved (4") or Flanged (4"-6"R) end connections variety and control options, making it the most versatile valve of its kind.

Hydraulic Data

	Metric	US
Max. Continuous Flow	160 m ³ /h	700 gpm
Max. Intermittent Flow	273 m ³ /h	1200 gpm
Min. Pressure	0.6 bar	9 psi
Max. Pressure	12 bar	175 psi
Max. Temperature	60°C	140°F
Kv / Cv	275 m ³ /h@1bar	320 gpm@1psi

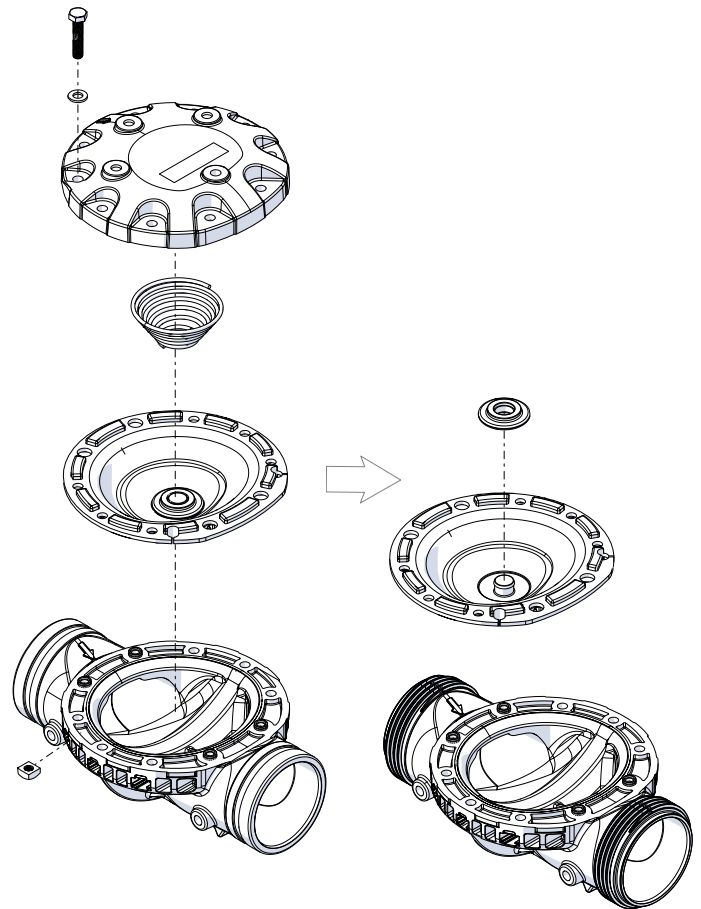


Head loss

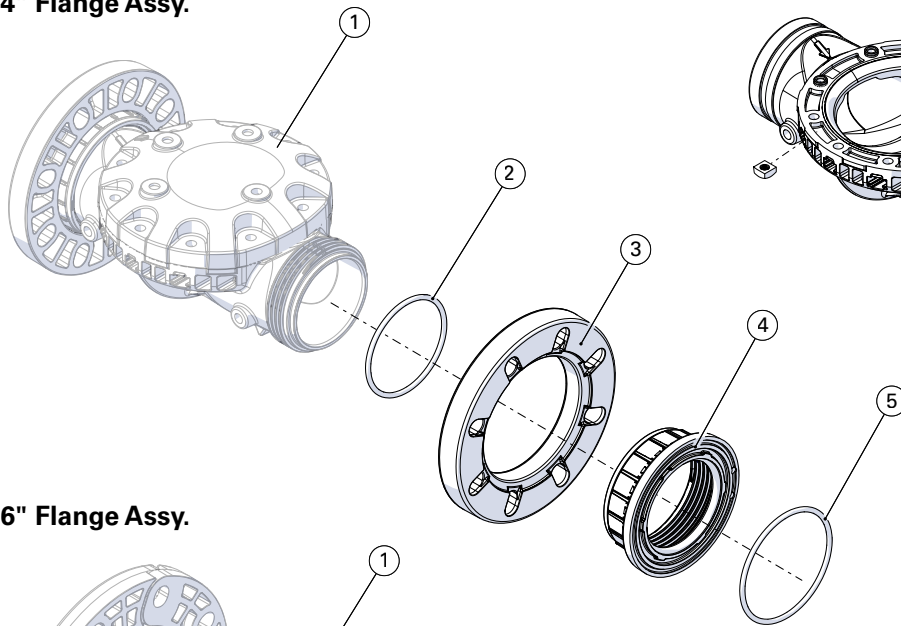


Parts and Materials

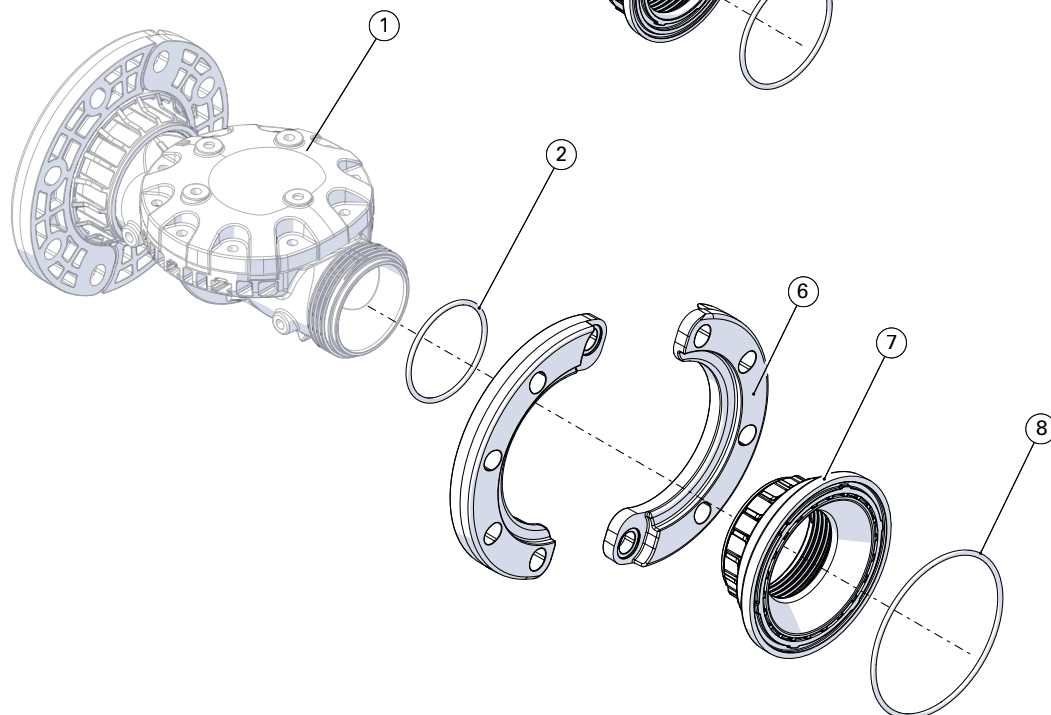
ID	Description	Material
1	Body and Cover	GRP
2	O-ring 2-346	NBR
3	4" Flange	GRP
4	Flange Adapter 4"	GRP
5	O-ring 2-351	NBR
6	6" Flange (2 pcs)	GRP
7	Flange Adapter 6"	GRP
8	O-ring 2-365	NBR



4" Flange Assy.



6" Flange Assy.

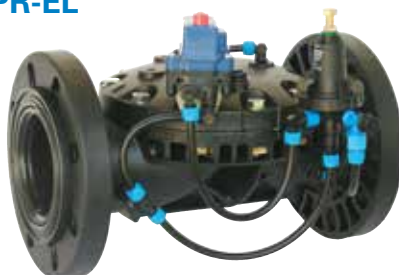


Typical Applications:

PR



PR-EL



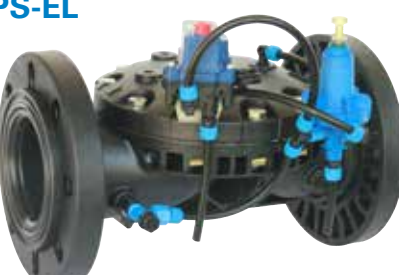
PR-EL-US



PS



PS-EL



PS-EL-US



Ordering guide:

Ordering data		Ordering code			Ordering data	
	75S	<input type="checkbox"/>	<input type="checkbox"/>	<input type="checkbox"/>		
Port size		↑	↑	↑		Application
4"/100mm	→	4		M	←	Manual ON-OFF
6"/150mm	→	6R		RC	←	Remote hydraulic contro
End connection standard				EL	←	Electric 3Way valve
Grooved*	→	V		PR	←	Pressure Reducing
Flanged	→	F		PS	←	Pressure Sustaining/Relief
				PR/EL	←	Electrically-activated Pressure Reducing
				PR/RC	←	Hydraulically-activated Pressure Reducing
				PR/PS	←	Pressure Reducing and Pressure Sustaining
				PS/EL	←	Electrically-activated Pressure Sustaining
				FR	←	Flow Control Valve
				FL	←	Modulating Float Controlled Valve
				XX	←	Other (Specify)

* Grooved on 4" only

Diverse · Compact · Durable · Precise



E-mail: info@dorot.com • www.dorot.com

